

# CAPABILITY STATEMENT 2023

---





# BLUME

GROUP

## THIS IS BLUME

- ▶ Blume Group is more than just a collection of brands; it is a cohesive unit driven by a unified vision of engineering and design excellence. Our commitment to sustainability, resilience, and innovation sets us apart in the industry. We understand that the challenges of the 21st century require forward-thinking solutions, and we are dedicated to delivering them.
- ▶ Through the integration of cutting-edge technology, creative thinking, and a client-centric approach, Blume Group is actively shaping a better future. We believe that every project is an opportunity to make a positive impact, and that the demand for intelligent solutions has never been more pressing. Our team of experts is passionate about pushing the boundaries of what is possible, consistently striving to exceed expectations and drive meaningful change.
- ▶ At Blume Group, we recognize that success isn't just about completing projects; it's about leaving a lasting legacy. That's why we approach every endeavor with a strong focus on long-term sustainability and a deep understanding of the social, economic, and environmental implications of our work. By combining our technical expertise with a holistic perspective, we ensure that our solutions address the needs of today while anticipating the challenges of tomorrow.

With Blume Group as your trusted partner, let's embark on a transformative journey, ignite positive evolution and pave the way for a regenerative future.



**BLUME**  
TECHNICAL AND DESIGN

## WELCOME TO BLUME TECHNICAL & DESIGN

- ▶ Welcome to Blume Technical and Design, where precision meets innovation. Whether you're embarking on a residential, commercial or industrial project, we offer a comprehensive range of services from 3D laser scanning, to detailed BIM/drafting implementation and handle every aspect of the project process with meticulous attention to detail.
- ▶ We believe in fostering strong and collaborative relationships, working closely with you to understand your unique vision and requirements. Our team of talented professionals brings a wealth of experience, creativity, and a passion to each project, ensuring that we exceed your expectations and deliver results that transform your ambitions into reality.

### ... SERVICES ...

At Blume Technical & Design, we offer a comprehensive range of service tailored to meet evolving need of the industry. Our expertise include:



#### **BIM (Building and Information Technology)**

Harness the power of BIM technology to streamline your construction projects. Our team utilizes advanced software to optimize collaboration, enhance efficiency, and minimize errors, resulting in cost-effective and sustainable outcomes.



#### **Drafting Services**

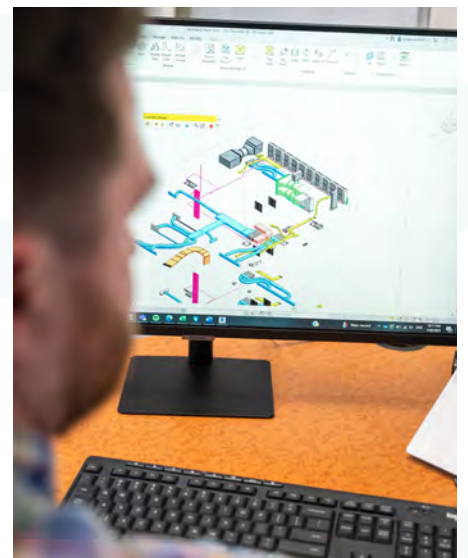
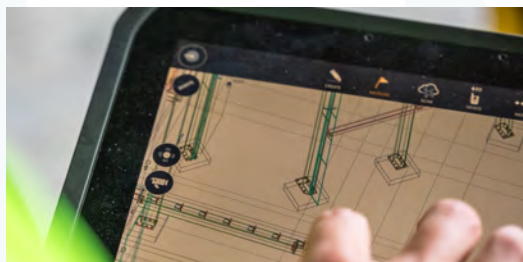
From conceptual sketches to detailed drawings, our skilled drafters transform ideas into precise and accurate documentation. We employ the latest tools and techniques to ensure seamless communication and smooth project execution.



#### **3D Laser Scanning**

Experience the cutting-edge technology with our state-of-the-art Trimble X7 scanner. Capture accurate as-built measurements and generate detailed point clouds for a comprehensive understanding of existing structures, facilitating design modifications and restoration.

Our commitment to excellence, attention to detail and client-centric approach makes us the preferred choice for design and drafting services in the industry





**BLUME**  
STRUCTURAL ENGINEERING

## WELCOME TO **BLUME STRUCTURAL ENGINEERING**

- ▶ Blume Structural Engineering is a leading provider of comprehensive engineering solutions in the fields of construction, transport infrastructure, and structures. Our specialist team of engineers and advisors possess large-scale proficiency and knowledge in a diverse range of industries, enabling us to deliver innovative and effective outcomes that meet the distinctive requirements of our clients.
- ▶ Blume Structural Engineering is dedicated to providing exceptional engineering services that go above and beyond clients' expectations. Our commitment to excellence is reflected in everything we do, from the initial project planning stage to the final delivery.

### ..... SERVICES .....

Experience the unparalleled expertise of Blume Structural Engineering.



Our construction engineering and temporary works include heavy lifting and material handling, temporary work design, construction methodology and advisory services.

We adopt pioneering technology and industry best practices to ensure the safe and efficient implementation of all projects while maintaining a focus on cost effectiveness and sustainability.

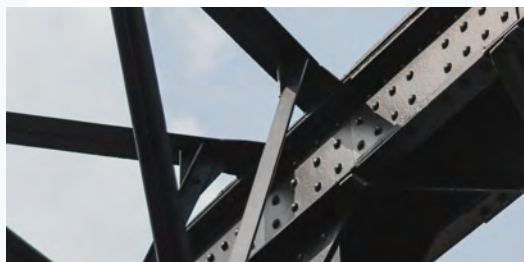


In the field of transport infrastructure engineering we specialize in the design and management of complex transport infrastructure systems, including bridge engineering and asset management. Our team has an immersed understanding of the challenges and opportunities associated with modern transport infrastructure, and we are committed to delivering advance and practical solutions.



Our capability in structures includes value re-engineering, forensic and expert witness, structural repurposing, and heritage building services. We work closely with our clientele to identify opportunities, optimization and provide expert witness services to support legal and regulatory proceedings. Additionally, we specialize in the repurposing and preservation of heritage buildings, employing our extensive knowledge of traditional construction techniques and materials to deliver viable solutions that the past while meeting the needs of the present.

Contact us today to explore our extensive capabilities and discover how we can assist you in achieving your project goals with unmatched skill and precision.





**BLUME**  
ACOUSTIC

## WELCOME TO **BLUME** ACOUSTIC

- ▶ At Blume Acoustic, we are dedicated to delivering exceptional acoustic solutions engineered to perfection. We combine our technical knowledge, innovative thinking, and attention to detail to develop tailored solutions that address the unique challenges of each project. We understand the importance of creating spaces that are acoustically optimized, whether it's for residential, commercial, or industrial purposes. Our goal is to enhance the quality of your environment by effectively managing noise and creating a harmonious atmosphere.
- ▶ With a team of highly skilled professionals and a wealth of industry experience, Blume Acoustic is your trusted partner for all your acoustic needs. We believe that collaboration and communication are key to success and work closely with our clients to understand their needs and objectives, ensuring that our solutions align with their vision. From initial consultation to project completion, we are committed to providing personalized service and support every step of the way.

### ... SERVICES ...

Blume Acoustic specialises in offering practical engineered acoustic solutions for various applications, including built environment, transportation, industrial facilities, and more.



Our expertise encompasses noise control, sound insulation, acoustic isolation, room acoustics and acoustic measurements. With comprehensive services, including noise surveys, design, noise isolation, noise mitigation, and commissioning, we are dedicated to developing engineered acoustic solutions tailored to your specific needs.

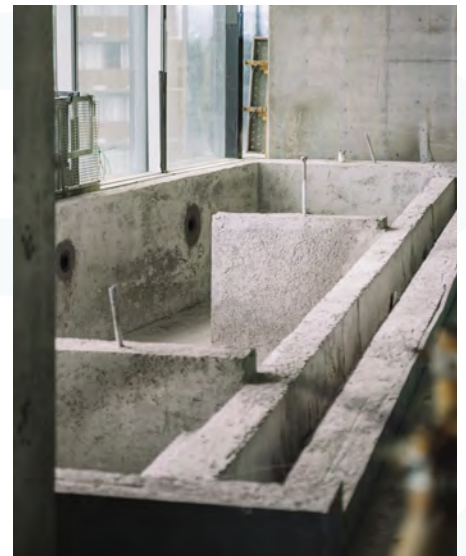
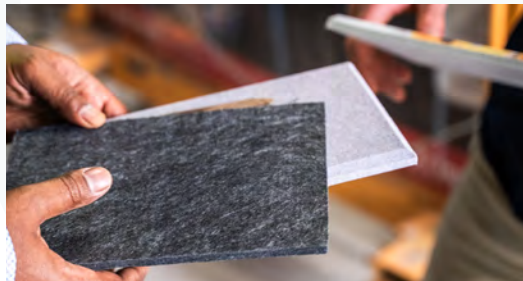


Our experience spans across diverse industries, including construction, education, minerals processing, mining, manufacturing, transportation and defence. We pride ourselves on providing the highest quality service to our clients by investing the time upfront to ensure we thoroughly understand their challenges; this enables our team to provide the correct solution the first time, every time.



We are known for taking on the most demanding and challenging projects, because we believe there is no noise issue that we cannot attenuate. We pride ourselves in investing time with the clients to really understand the nature of their issues to ensure we provide appropriate solutions the first time.

Trust Blume Acoustic as your expert partner for resolving all your noise-related challenges.





**BLUME**  
PLANNING & DEVELOPMENT

## WELCOME TO **BLUME PLANNING AND DEVELOPMENT**

- ▶ Blume Planning and Development is a dynamic town planning firm dedicated to empowering communities and unlocking their full potential. With a passion for creating sustainable and inclusive spaces, we specialise in providing innovative town planning solutions that enhance livability, functionality and economic vitality of cities and towns.

At Blume, we understand that effective town planning is not just about buildings and infrastructure; it's about shaping environments that foster social connections, economic growth, and environment stewardship. Our multidisciplinary team of experienced professionals brings together expertise in urban planning,

design, policy, and community engagement to deliver holistic solutions that address the unique challenges of each project.

Driven by a commitment to collaboration and excellence, we work closely with our clients, local governments, and stakeholders to ensure that our planning initiatives align with the vision and aspirations of the community. By listening attentively to the needs and desires of residents, businesses, and organisations, we strive to create spaces that reflect the local identity and create a sense of belonging.

### ... SERVICES ...

Blume Planning and Development offers a range of sophisticated town planning services designed to address the specific needs of our clients. Our services include:



We specialize in developing master plans that shape the future growth and development of communities. Through a collaborative and data-driven approach, we create a comprehensive framework that integrates land use, transportation, infrastructure, and environmental considerations to guide sustainable development.



Our team of experts excels in navigating the complex regulatory landscape to secure development approvals and permits. We meticulously prepare and submit applications, conduct impact assessments and provide strategic advice to optimize the success of your development projects.



Blume Planning and Development provides end-to-end project management services, overseeing all aspects of the planning and development process. From initial concept design to construction coordination, we ensure seamless execution, on-time

Unlock the potential of your community with Blume Planning and Development. Contact us today to discover how our innovative and strategic town planning solutions can help shape a vibrant and prosperous future for your city or town.





**Blume Group Pty Ltd**  
ABN: 80 666 585 235

**Blume Technical and Design Pty Ltd** ABN:  
32 667 802 897

**Blume Structural Engineering Pty Ltd**  
ABN: 32 667 915 871

**Blume Acoustic Pty Ltd**  
ABN: 70 668 189 875

**Blume Planning and Development Pty Ltd**  
ABN: 17 670 296 759

**Queensland Head Office**  
Post: PO Box 681 Albany Creek QLD 4035  
Email: [info@blumegroup.com.au](mailto:info@blumegroup.com.au)